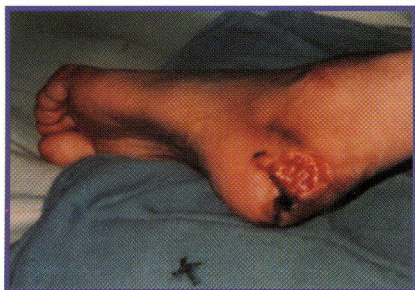


# hyCURE®

Advanced Woundcare

## CASE STUDY Pressure Ulcer

W.S., 54 year-old white male paraplegic with a Stage 3 Pressure Ulcer at left lateral heel of deformed atrophic foot.



**5/16/97**

Left heel open wound measuring 2.5cm long x 1.88cm wide, triangular shape with old scar tissue and dried drainage present. Using pressure reducing boot.

**5/22/97**

Wound filled, flattened and contracted. Drainage decreased.

**5/29/97**

New granulation tissue extending into wound.

**6/5/97**

Patient admitted to Muhlenberg Rehabilitation Hospital. Wound measured 1.3cm long x 0.9cm wide. Minimal serous drainage present. 100% granulation tissue with epithelialization surrounding wound.

**6/18/97**

Minimal serous drainage, with no maceration present. No odor present. Epithelialization.

**6/23/97**

Wound healed.



"This paraplegic patient arrived with multiple pressure ulcers after prolonged malnutrition and immobility. It was remarkable that the heel wound responded in slightly greater than one month to closure."

Edna Keister  
RN, BBA, CETN, OCN



# hyCURE®

Advanced Woundcare  
Natural Woundcare Therapy